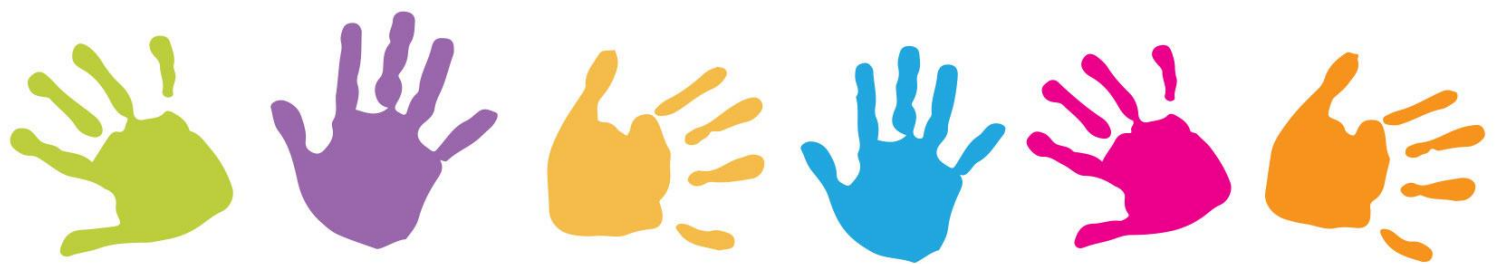


Childcare Funding Support



Student
Services



CONTENTS

Introduction	2
Childcare Funding Support.....	3
Childcare Application.....	5
Procedures.....	7
Childcare Funding Case Studies	8

Introduction

Dundee and Angus College has designated Student Childcare Support Advisers within Student Services Team. They are responsible for determining childcare funding requirements and assisting you to arrange suitable childcare support during your studies at College.

Finding suitable childcare and appropriate funding is an extremely important consideration when coming to college. This booklet has been produced to provide you with a rough guide of your financial entitlement and possible childcare support in the Tayside and Angus Area.

It is important that you check your situation before starting college with organisations who are listed at the end of this booklet. Alternatively contact Student Services. We are here to help you explore your options and ensure you receive all the financial support you are entitled to.

Best wishes for your future and do enjoy your studies with us.

Student Services

Dundee and Angus College

Childcare Funding Support

Dundee and Angus College is committed to providing childcare advice and support from two designated Childcare Advisors based at Arbroath Campus and Dundee Campuses, who will assist students to arrange suitable childcare and funding while studying at College.

What is the Childcare Fund?

- This is a discretionary fund that the Scottish Government has provided to colleges to help students with childcare costs while studying
- Childcare Funding is awarded for timetabled hours in College and any arrangements made out with timetabled hours will be between the parent and the childcare provider
- Funds are limited and are allocated to applicants starting in September and January
- Applications received after 11th **October 2021** are subject to funds still being available and may not be backdated to the start of the academic year
- The college can only consider childcare providers who are registered with the Care Inspectorate

Who is eligible?

- Students who qualify for Bursary Support at FE level and students at HE level who qualify for the maximum loan from SAAS can apply to the childcare fund
- Lone Parents on Income Support/Universal Credit
- Full-time students who meet residency eligibility*
- Part-time students registered on the college Fee-Waiver Scheme attending vocational day classes who are in receipt of state benefits
- Students must be in receipt of child benefit or child tax credits OR Universal Credit for the child
- Financial assistance is normally available for children up to the age of fourteen
- The amount of childcare you will be awarded will depend upon how much your household income is
- The College will not pay any childcare costs for students who have partners who are currently unemployed and at home

***for information on eligibility please refer to Student Awards Agency for Scotland (<https://www.saas.gov.uk>) and Scottish Funding Council (<https://www.sfc.ac.uk>) or speak to one of our Dundee and Angus College Advisers on Dundee 01382 834844 or Arbroath 01241 432752.**

Residency Eligibility (Brexit)

Only students who meet residency requirements may claim College Childcare support towards their childcare costs. If you are an EU, EEA or Swiss citizen and you were resident in the UK on or before 31 December 2020, you should apply to the EU Settlement Scheme. Applications are free and the deadline for applying is 30 June 2021.

How is it assessed?

The amount of childcare you will be awarded will depend upon how much your household income is and the weekly cost of your childcare.

If you are working and wish to continue to work while at College and receive help with childcare cost through the Childcare Element of Working Tax Credit or the Childcare Element of Universal Credit, then this will also be taken into consideration when assessing the childcare funding award from the College.

How is it awarded?

You will be provided with an award letter together with student's terms and conditions and a payment schedule.

If your award is less than your childcare provider's full fees then it will be your responsibility to pay the difference.

Studying at Arbroath Campus

If you are studying in the Arbroath campus and your child is aged between 2 ½ and 5 years you may apply for a place at our college nursery.

Application forms for Angus Campus Helping Hands Nursery are available from the Arbroath Advice Centre or college website. For further information please call on 01241 432604 or email j.donaldson@dundeeandangus.ac.uk

HNC/D SAAS Funding

To receive any funding from the College, students must have applied for the maximum support from SAAS, including tuition fees and a full loan.

If you are a lone parent you may be eligible for the Independent Students Bursary and the Lone Parent Grant. <https://www.saas.gov.uk>

Lone Parent Additional Support – At College

Lone Parent Childcare Grant Element – For FE and HE students, this is an entitlement payment up to £1,260 per year to all eligible further and higher education students, who are lone parents and have formal registered childcare expenses while studying. You do not need to apply for this yourself, it will be awarded automatically and will be included into your final childcare award.

HNC/D Lone Parent SAAS Funding

If you are a single parent on HNC/D level, you may receive a non-repayable supplementary grant of £1,305 paid to yourself over the academic year. You must apply directly to SAAS along with the fees and loan once you have been offered a place at Dundee and Angus College.

Please check the SAAS website for further funding options: <https://saas.gov.uk>
Satisfactory evidence of being a Lone Parent and having registered childcare costs will be required.

Childcare/Housing Funding

Students cannot access both Childcare and Housing Funds, to find out what funds are best for you, please contact the Student Services team on 01382 834884/01241 432743.

Childcare Application

Your on-line Childcare Application must be finalised before the start date of your course. Otherwise, your childcare payments will be delayed and you may have to meet the childcare provider's fees until your childcare funding from the College has been awarded.

Childcare Financial Assistance

Full-time Students

Up to 100% of the full cost of childcare, up to a maximum of £120 per week for 1 child and £180 per week for 2 or more children will be met by the college when the child is being looked after by a registered carer.

Gross Household Income	Maximum College Contribution Per Week			
	1 child		2 or more children	
	A couple	Lone parent	A couple	Lone parent
£20,000 or below	£120.00	£150.00**	£180.00	£210.00**
£20,001 - £23,000	£100.00	£130.00**	£140.00	£150.00**
£23,001- £25,000	£ 75.00	£105.00**	£105.00	£135.00**
£25,001 - £30,000	£ 37.50	£ 75.00**	£ 52.50	£105.00**
Over £30,000	£ 0.00	£ 0.00	£ 0.00	£ 0.00

*This amount includes the Lone Parent Childcare Grant Element

Example:

Gross Household income is £19,999, if the childcare costs for one child is £160 per week, then the college contribution is £120 (max) per week for a couple and £150 (max) for a lone parent.

Part-time Students

Up to 100% of the full cost of childcare for one child up to a maximum of £80.00 per week for one child and £110 per week for 2 or more children will be met by the college when the child is being looked after by a registered carer.

Gross Household Income	Maximum College Contribution Per Week	
	1 Child	2 or more Children
£20,000 or below	£80	£110
£20,001 – £23,000	£60	£82.50
£23,001 - £25,000	£40	£55
£25,001-£30,000	£20	£27.50
£30,001 +	£0	£0

****Please note the above figures may change due to 2021/22 College allocation of Funds from the Scottish Government**

Procedures

How is it Paid

If your application is successful, the funding will be paid directly to the childcare provider fortnightly in arrears once the childcare forms and invoices have been submitted by the provider.

College Holidays

The College will pay a 50% retainer to nurseries and childminders during the College October, Christmas and Easter holidays and students will be required to cover the remaining childcare costs.

Out of school care clubs and playgroups will not be paid during college holiday weeks.

College holidays weeks are:-

- **Week beginning 11th October 2021 - 1 week only**
- **Thursday 23rd December 2021 to Thursday 6th January 2022**
- **Monday 4th April 2022 to Monday 18th April 2022**

Holidays taken out with the normal College holiday periods will be treated as a normal absence. Therefore, we will not make any payment for that period. It will be your responsibility to meet this cost.

What is not covered?

There will be no payments for deposits, registration, annual joining fees or induction days. Please note, out-of-school clubs will not be paid during college holiday weeks. If you have any concerns, please discuss them with the Childcare Advisor.

Changes in Circumstances

Any changes to your circumstances after the submission of your application must be made in writing e.g. Change of income, timetable, childcare provider, hours of care, holiday periods, etc.

Notice Period to Childcare Provider

It is the student's responsibility to provide notice of termination to the childcare provider (generally this can be up to 4 weeks). The student will be liable for any cost due by not providing the appropriate period of notice. The College will not be responsible for outstanding fees occurred by the student.

Attendance

Attendance will be monitored throughout the academic year and if your attendance is found to be below 100% at any one time, childcare funding will be **stopped** and you will be liable to pay full childcare costs. If you have been absent for a period approaching 4 weeks, your funding will automatically stop until such time you have returned to your studies.

Childcare Funding Case Studies

Case 1

"Michelle is starting her NC Animal Care and she needs childcare for her two year old daughter. Her partner is unemployed at the moment but seeking full time employment. She has just applied for childcare funding from the college".

Michelle is not eligible for any financial assistance with her childcare costs as the college cannot help students if their partners are currently unemployed and at home. However, when the partner starts working and Michelle submits proof of this, then the College can consider her for funding.

Case 2

"Kirsty is a mother of three and unemployed. She is hoping to start her Access to Nursing course soon. Her partner is employed and their current joint household income is just below the acceptable funding limit. Kirsty is worried that according to the childcare funding threshold, she will only be eligible for the minimum childcare support. She is confused about her eligibility for college funding as her partner has changed jobs recently and should qualify for more support from the college".

Kirsty will only be eligible for the minimum childcare award from the college. The amount of childcare depends on student's household income based on the partner's P60, however, if there has been a significant drop in the household

income, the college will ask to provide this evidence of change in circumstances, such as partner's new employment contract and recent wage slips.

Case 3

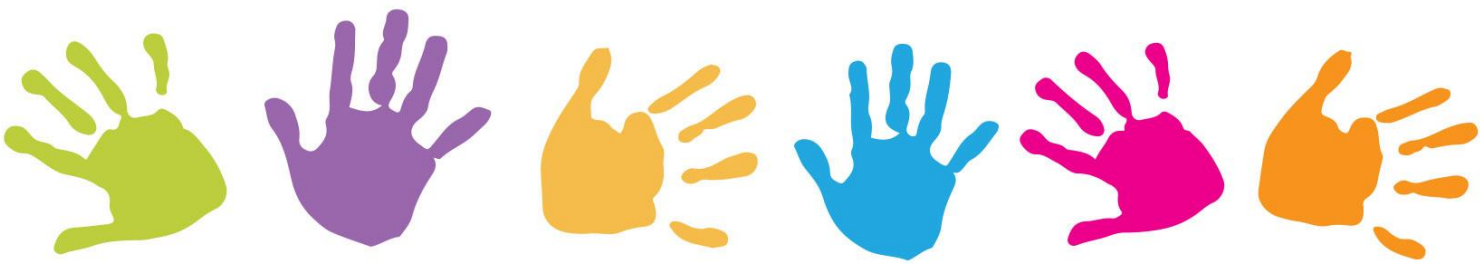
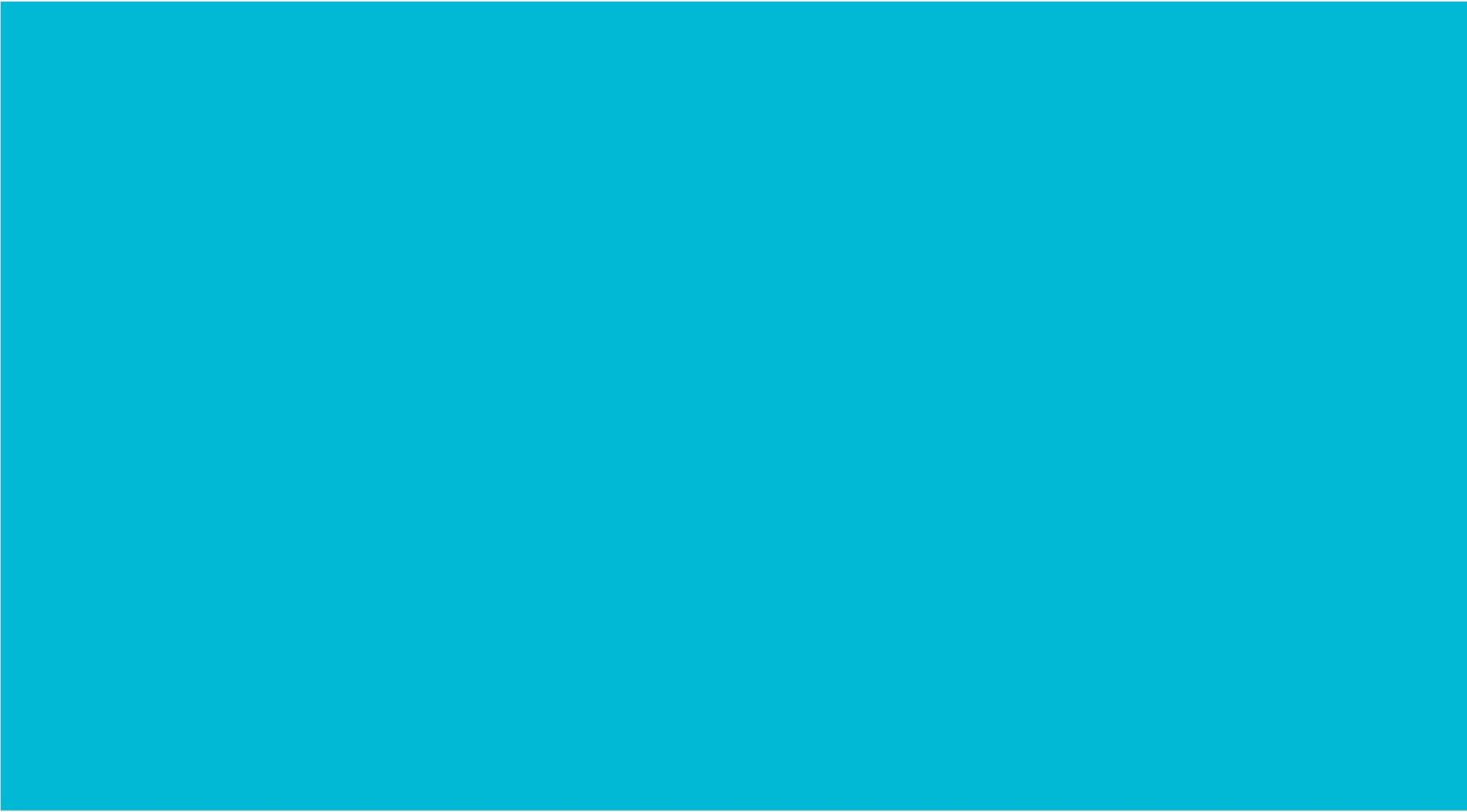
"Fiona is currently studying HNC Accounting. She will need a childcare provider soon as her mother is unable to look after her little girl anymore. She has just applied for a childcare support from the college. However, her SAAS award letter has been rejected, as she did not apply for the maximum support from the SAAS, including full loan.

Fiona is not eligible for any college financial assistance with her childcare costs. In order to receive any financial assistance from the college she must have applied for the maximum support from the SAAS, including the full loan. When Fiona applies for the maximum support from the SAAS, she must submit evidence, then the College can consider her for assistance.

Case 4

Alison has been accepted onto FE Hairdressing level 5 course and is worried about childcare providers and the costs. Alison is a lone parent with two children under 5-year-old and currently receiving Universal Credit and Housing benefit, but wants to apply for the college Bursary and come off her benefits.

Alison is entitled to receive the maximum childcare funding and the lone parent grant from the College, but must remain on all her benefits during her studies at College. If Alison stays on her benefits, she will be required to apply for the books and travel bursary award.



Dundee and Angus College is a charity registered in Scotland: No. SC021188.
Certain projects managed by Dundee and Angus College are supported by European Funding.