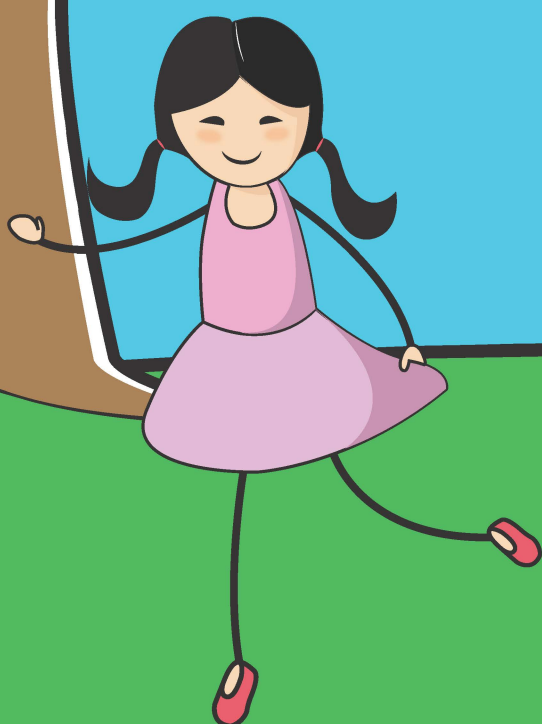




# Childcare

## Funding Support



Dundee and Angus College Student Services

# CONTENTS

Introduction .....	2
Childcare Funding Support .....	3
What is the Childcare Fund? .....	3
Who is eligible? .....	3
Local Authority Funding .....	4
How is it Assessed? .....	4
How is it Awarded? .....	5
Studying at Arbroath Campus .....	5
Childcare/Housing Funding .....	5
HNC/D SAAS Funding .....	5
Childcare Application .....	6
How is it Paid .....	6
What is Not Covered? .....	6
Attendance .....	6
Notice Period to Childcare Provider .....	6
College Holidays .....	7
Changes in Circumstances .....	7
Useful Contacts .....	8

## **Introduction**

Dundee and Angus College have designated Student Childcare Support Advisors within Student Services Team. They are responsible for determining childcare funding requirements and assisting you to arrange suitable childcare support during your studies at college.

Finding suitable childcare and appropriate funding is an extremely important consideration when coming to college. This booklet has been produced to provide you with a brief guide of your financial entitlement and possible childcare support in the Tayside and Angus Area.

It is important that you check your situation before starting college with organisations listed at the end of this booklet. Alternatively contact Student Services. We are here to help you explore your options and ensure you receive all the financial support you are entitled to.

Best wishes for your future and do enjoy your studies with us.

**Student Services**  
**Dundee and Angus College**

## Childcare Funding Support

Dundee and Angus College are committed to providing childcare advice and support from two designated Childcare Advisors based at Arbroath Campus and Dundee Campuses, who will assist students to arrange childcare funding while studying at College.

### What is the Childcare Fund?

- This is a discretionary fund that the Scottish Government has provided to colleges to help students with childcare costs while studying.
- Funds are limited and are allocated to applicants starting in September and January.
- Applications received after **10<sup>th</sup> October 2025** are subject to funds still being available and may not be backdated to the start of the academic year.
- The college can only consider childcare providers who are registered with the Care Inspectorate.

### Who is eligible?

- Students whose child is being looked after by a registered carer.
- Students who qualify for Bursary Support at FE level (non-advanced courses) and students at HE level (advanced courses) who have applied for the maximum support from SAAS.
- Lone Parents on Income Support/Universal Credit.
- Full-time students who meet residency requirements.
- Part-time students registered on the college Fee-Waiver Scheme attending vocational day classes who are in receipt of state benefits.
- Students must be in receipt of Child Benefit or Child Tax Credits OR Universal Credit for the child.
- Financial assistance is normally available for children up to the age of fourteen.
- Students below certain income (please refer to college thresholds).

**Please note: The College cannot help students with their childcare costs if their partners are currently unemployed and at home. If your partner is unable to work and unable to look after your child/ren please provide formal evidence of this.**



## Local Authority Funding

You may qualify for free childcare sessions from your local council - depending on your child's age and your circumstances. Students should first apply for free childcare sessions (if entitled to) prior to applying for college childcare funding. For further information on ELC please visit your local council website.

## How is it Assessed?

The amount of childcare you will be awarded will depend on your total household income from employment/self-employment and the weekly cost of your childcare.

If you are working and wish to continue to work while at college and receive help with childcare cost through the Childcare Element of Working Tax Credit or the Childcare Element of Universal Credit, then this will also be taken into consideration when assessing the childcare funding award from the College.

### College Childcare Funding Thresholds for Full-Time Students

Gross Household Income	Maximum College Contribution Per Week			
	1 child		2 or more children	
	A couple	Lone parent	A couple	Lone parent
£20,000 or below	£140.00	£160.00	£200.00	£230.00
£20,001 - £25,000	£120.00	£140.00	£160.00	£210.00
£25,001 - £30,000	£ 80.00	£100.00	£120.00	£140.00
£30,001 - £35,000	£ 40.00	£ 60.00	£ 60.00	£ 80.00
Over £35,000	£ 0.00	£ 0.00	£ 0.00	£ 0.00

**Please note: the above figures may change due to 2025/26 College allocation of Funds from the Scottish Government**

### Example:

The annual gross household income from employment/self-employment is £19,700. If the childcare costs for one child is £170 per week, then the College contribution will be £140 per week for a couple and £160 for a lone parent.

## How is it Awarded?

You will be provided with an award letter together with student's terms and conditions and a payment schedule. If your award is less than your childcare provider's full fees then it will be your responsibility to pay the difference.

## Studying at Arbroath Campus

If you are studying in the Arbroath campus and your child is aged between 2 and 5 years you may apply for a place at our college nursery.

**Please note, there are limited spaces for 2 years old.**

Application forms for Angus Campus Helping Hands Nursery are available from the Arbroath Advice Centre or college website. For further information please call on 01241 432604 or email [j.donaldson@dundeeandangus.ac.uk](mailto:j.donaldson@dundeeandangus.ac.uk)

## Childcare/Housing Funding

Students usually cannot access both Childcare and Housing Funds. To find out which fund is better for you please contact the Student Services team on 01382 834884 or 01241 432743

## HNC/D SAAS Funding

To receive any funding from the College, students must have applied for the maximum support from SAAS that they are entitled to, including tuition fees and a full loan. You must apply directly to SAAS along with the fees and loan once you have been offered a place at Dundee and Angus College.

If you are a single parent you may be entitled to the Lone Parents' Grant (LPG). The maximum grant SAAS can pay is £1,305 a year.

Please visit the SAAS website for further funding options: [www.saas.gov.uk](http://www.saas.gov.uk)

## **Childcare Application**

Your online Childcare Application must be finalised before the start date of your course. Otherwise, your childcare payments will be delayed and you may have to meet the childcare provider's fees until your childcare funding from the College has been awarded.

## **How is it Paid**

If your application is successful the funding will be paid directly to the childcare provider fortnightly in arrears once the childcare forms and invoices have been submitted by the provider.

## **What is Not Covered?**

The College will not cover deposits, registration fees, annual joining fees or induction days. Childcare costs occurred before the official start date of the course will not be covered.

Childcare Funding is awarded for timetabled hours in College and any arrangements made out with timetabled hours will be between the parent and the childcare provider.

If you have any concerns, please discuss them with the Childcare Advisor.

## **Attendance**

Your attendance will be monitored throughout the academic year and if your attendance is found to be below 80% in any week your childcare funding will be stopped for that week and you will be liable to pay full childcare costs for the week/s of your absence.

If you have been absent for a period approaching 4 weeks, your funding will automatically stop until such time you have returned to your studies.

## **Notice Period to Childcare Provider**

It is the student's responsibility to provide notice of termination to the childcare provider (this can be up to 4 weeks). The student will be liable for any cost due by not providing the appropriate period of notice. The College will not be responsible for outstanding fees occurred by the student.

## **College Holidays**

The College will pay a 50% retainer to nurseries and childminders during the College October, Christmas and Easter holidays and students will be required to cover the remaining childcare costs.

Out of school care clubs and playgroups will not be paid during college holiday weeks.

Holidays taken out with the normal College holiday periods will be treated as a normal absence. Therefore, we will not make any payment for that period. It will be your responsibility to meet this cost.

## **Changes in Circumstances**

Any changes to your circumstances after the submission of your application must be made in writing, e.g. change of income, timetable, childcare provider, hours of care, holiday periods, etc. Please discuss them with the Childcare Advisor.

## Useful Contacts

### Student Services

**Childcare (Gardyne Campus and Kingsway Campus)**

**01382834884**

[m.thomson@dundeeandangus.ac.uk](mailto:m.thomson@dundeeandangus.ac.uk)

**Childcare (Arbroath Campus)**

**01241 432743**

[r.antos@dundeeandangus.ac.uk](mailto:r.antos@dundeeandangus.ac.uk)

**Arbroath Advice Centre**

**01241 432604**

[j.donaldson@dundeeandangus.ac.uk](mailto:j.donaldson@dundeeandangus.ac.uk)

### Help Point

**0300 123 10 36**

[heretohelp@dundeeandangus.ac.uk](mailto:heretohelp@dundeeandangus.ac.uk)

